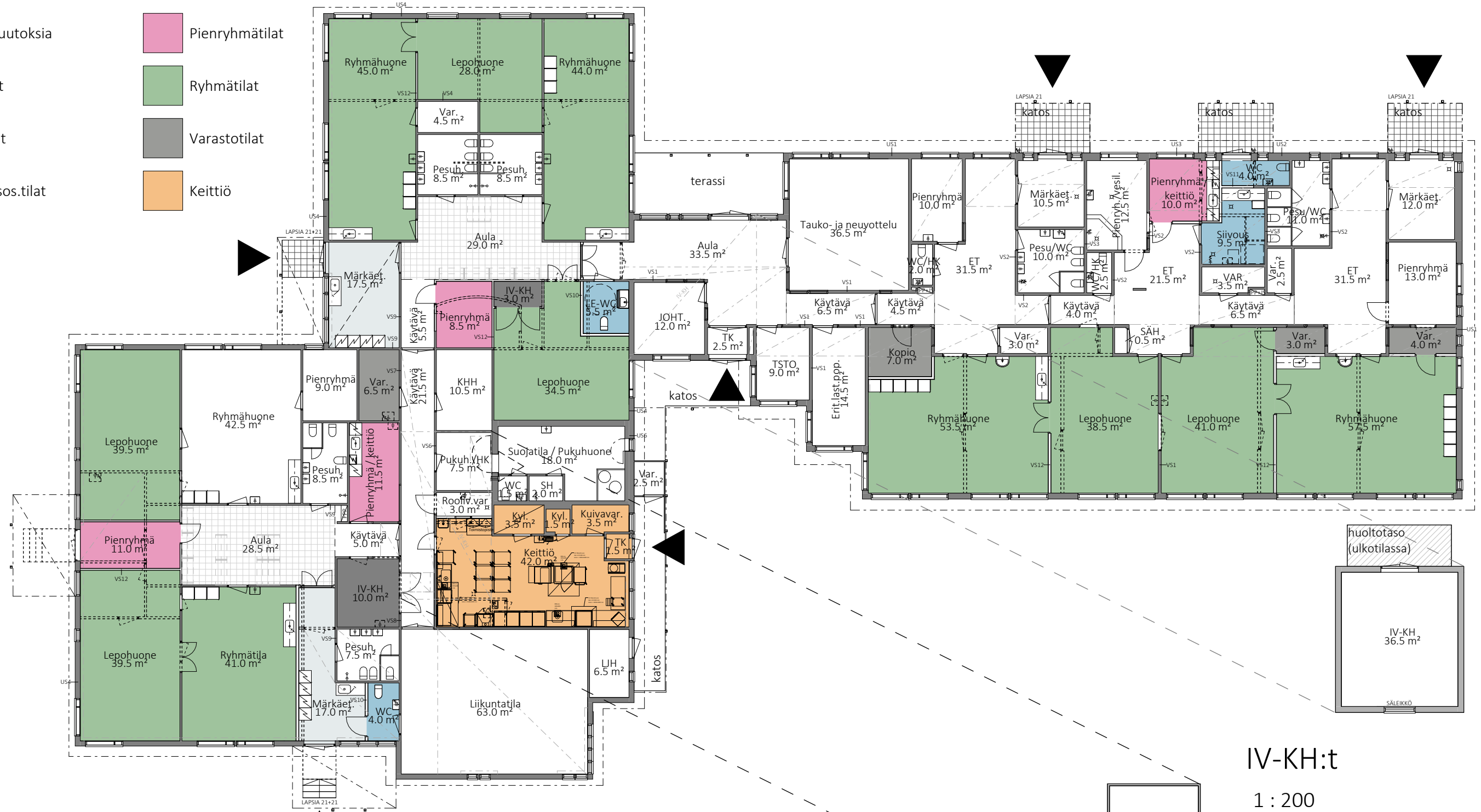





1:200

- | | | | |
|---|------------------|---|----------------|
|  | Ei tilamuutoksia |  | Pienryhmätilat |
|  | Aulatilat |  | Ryhmätilat |
|  | Eteistilat |  | Varastotilat |
|  | WC- ja sos.tilat |  | Keittiö |
|  | IV-KH | | |



- 1.krs bruttoala 1366.5 brm²
2.krs bruttoala 44.0 brm²
Rakennuksen bruttoala 1410.5 brm²
- | | |
|---|-----------------|
|  | oleva rakenne |
|  | uusi rakenne |
|  | purettu rakenne |

IV-KH:t
1 : 200

